

EDB Postgres Replication Server

Flexible with PostgreSQL, Oracle® and SQL Server®

Data silos, exponential growth, reporting needs and time criticality all lead to new ways of thinking about IT. While high availability and disaster recovery have been commonly regarded essential for years, many organizations now realize the need for scalability and managing data holistically. The sum of these challenges might seem overwhelming at times and can only be overcome by solutions that integrate well in your data center.

EDB Postgres Replication Server, a component of the EDB Postgres Integration Suite, offers reliable, flexible replication from or to a single master or between multiple masters.

Besides making data highly available Replication Server helps to isolate transactional from reporting workloads achieving better read and write scalability. You can also rely on Replication Server to reduce downtime for maintenance and upgrades to a minimum, as well as to create copies of production data for testing and development to shorten the time to market.

EDB Postgres Replication Server is the only production-released replication technology that is based on PostgreSQL's logical decoding functionality, improving throughput and reducing latency dramatically.

There are many use cases for EDB Postgres Replication Server. To find out what it can do for you, contact us today.

Highlights

Integration

Exchange data between heterogeneous databases eliminating cumbersome ETL workloads.

Flexibility

Replicate subsets of tables reducing data redundancy and latency.

Faster replication

Log-based replication supports more users, bigger workloads, and larger replication clusters.

High Availability

Secure your data and redirect queries to another master or replica in case of a failure. In a multi-master configuration, data is accessible on any other master almost immediately.

Performance

A read replica will take load off the master improving performance for transaction processing on the master and reporting on the replica.

Minimal Downtime

Direct queries to another master, while performing maintenance or upgrades.

Cost Savings

Integrate with traditional proprietary databases and reduce cost for Oracle® Active Data Guard or SQL Server®.

Geographical Distribution

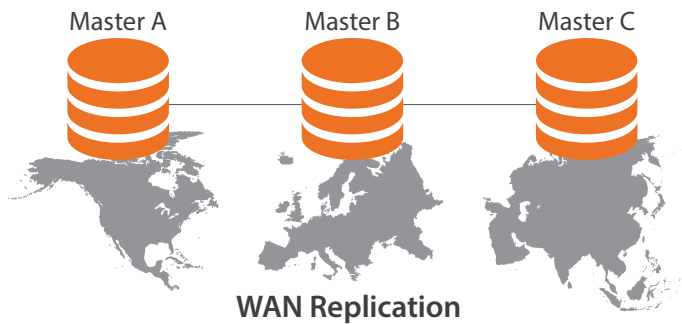
Masters in multiple locations provide consolidated views of all data in near-real time.

Single Master Replication

EDB Postgres Replication Server implements single master replication (SMR) using a publish-subscribe model. Each publication can have subscriptions from multiple replicas.

SMR is available between EDB Postgres databases, EDB Postgres and Oracle®, and EDB Postgres and SQL Server®.

Multi-Master Replication

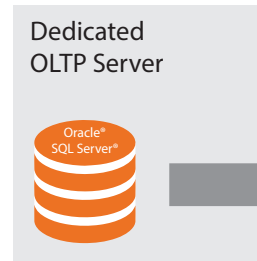


Easy Graphical Replication Management

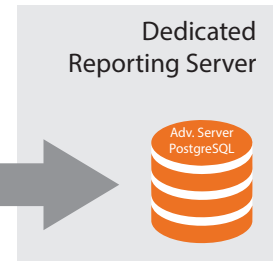
Installation, configuration, setup and ongoing management are straight-forward with the management GUI. The dedicated administrators' console allows you to filter table data and setup schedule-based replication times.

The GUI also provides real time monitoring of your replication as well as a history viewer for keeping on top of all replication activities around the clock.

Improved Performance

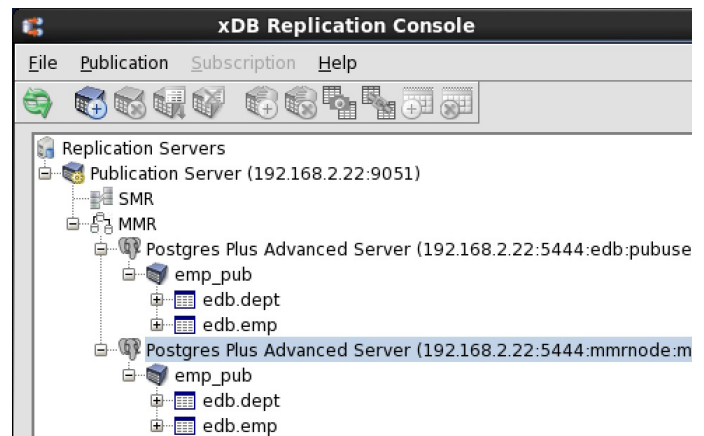


Improved Performance



Multi-master replication (MMR) allows for geographically distributed database masters with read/write access. Each geography updates a local master faster than a single common master. In case of conflicting edits, Replication Server provides automatic conflict resolution.

MMR is available between EDB Postgres databases.



Contact us

Australia	+61 2 8019 7055	Japan	+81 50 5532 7038	United States	+1 781 357 3390
Germany	+49 241 4056653	Netherlands	+31 70 240 0933		
India	+91 20 366449600	United Kingdom	+44 1494 616093		