

MONITOR MANAGE TUNE

LARGE-SCALE, ENTERPRISE-WIDE POSTGRES DEPLOYMENTS

POSTGRES ENTERPRISE MANAGER®



**A Comprehensive
Management Tool for
Postgres Deployments**

Postgres Enterprise Manager (PEM) is designed to easily manage large-scale Postgres deployments that are on-premise, virtualized, or in the cloud. Monitoring agents report data that is stored and aggregated, and then key metrics are displayed in at-a-glance dashboards.



**Easily Administer,
Monitor, and Tune
Large Postgres
Deployments**

PEM is a component of the EDB Postgres Platform, providing a single graphical tool where DBAs and developers can easily administer, monitor, and tune large Postgres deployments. PEM extends the capabilities of the open source tool, pgAdmin, to include a rich set of APIs, alerts, wizards and dashboards. These management and monitoring capabilities are critical to enterprises adhering to stringent SLAs and performance requirements.



**Collect, Monitor,
and Analyze Data
for Alert Conditions**

PEM collects performance and status data from databases, the operating system, and jobs on the database host. This data is displayed in dashboards and analyzed for alert conditions. Alerts can be relayed to operators via built in charts and dashboards, e-mail, or SNMP alerts, and can be integrated with other monitoring tools. PEM also allows DBAs and developers to work with the databases directly, execute DDL and DML commands, tune queries, manage indexes, run backups, and deploy software updates.

LEARN MORE

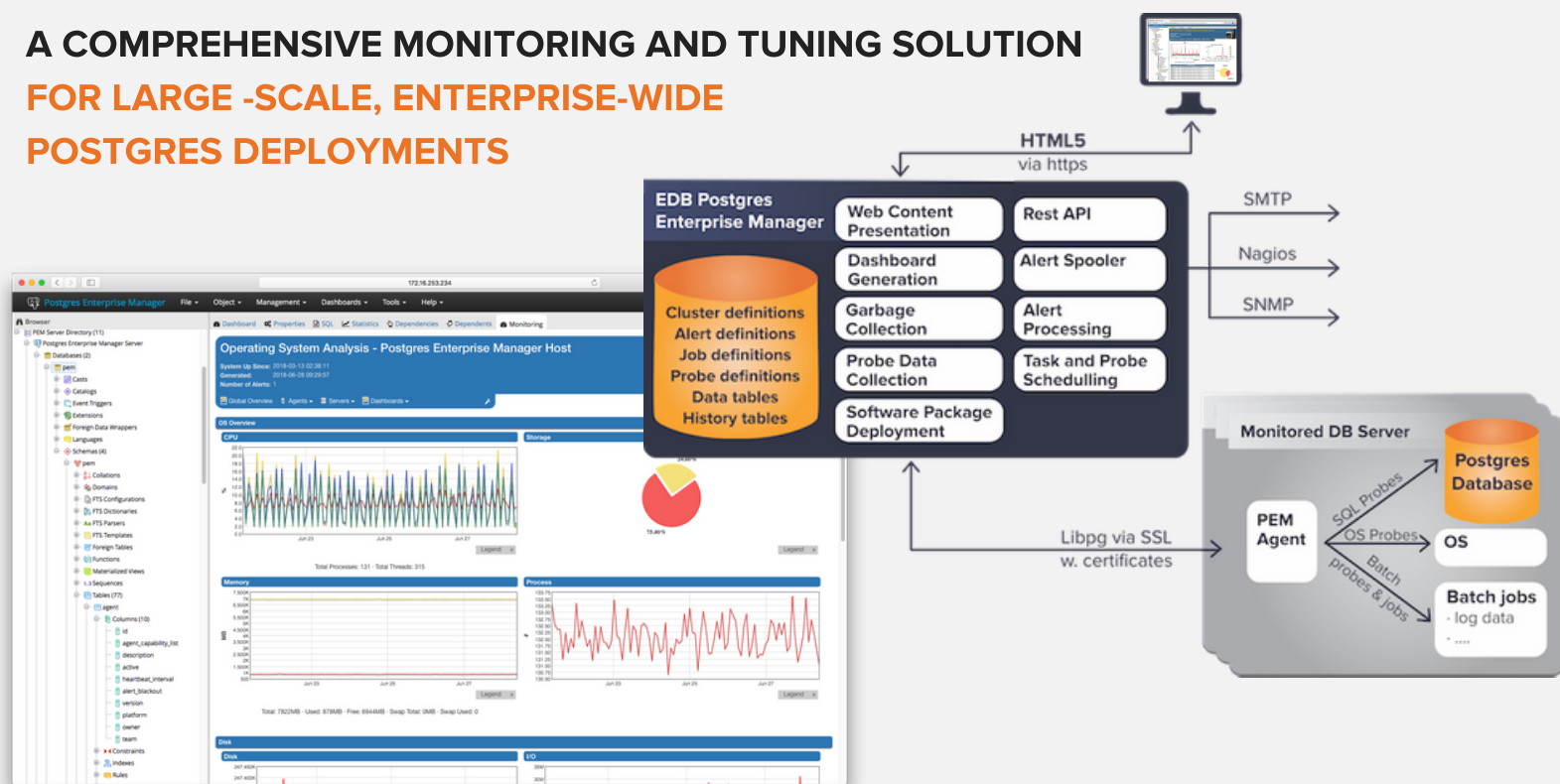
Contact EDB for more
information. Call or email
info@enterprisedb.com

**Efficiently control and manage large numbers of
Postgres databases. For more information, review the
[PEM "Getting Started Guide"](#).**

LEARN MORE AT WWW.ENTERPRISEDB.COM/PEM

EnterpriseDB, EDB and EDB Postgres are trademarks of EnterpriseDB Corporation. Other names may be trademarks of their respective owners. Copyright© 2018. All rights reserved. 20180628

A COMPREHENSIVE MONITORING AND TUNING SOLUTION FOR LARGE -SCALE, ENTERPRISE-WIDE POSTGRES DEPLOYMENTS



Extensible probe-based system to collect metrics for reporting and alerting.

Easy to use wizards for scheduled or ad hoc management of multiple databases.

Tools to identify and optimize poor running SQL.

PEM HIGHLIGHTS

Profiling Workloads

Trace and diagnose queries that are run against a database.

Dashboards & Charts

Use the out of the box standards or create custom dashboards to check current and historical performance.

Alerts

Can be relayed to operators via built in charts and dashboards, e-mail, or SNMP alerts, and integrated with other monitoring tools.

Streaming Replication, Configuration and Monitoring

PEM simplifies adding new servers, configuring replication, and monitoring via the dashboard.

SQL Profiler

Profile on a scheduled or ad-hoc basis to trace SQL statements, and troubleshoot and optimize slow SQL queries.

Log Manager

Simplifies the configuration of server logs and aggregate log information from a single console.

IDE for Development

Interface to write and execute queries for managed databases

Postgres Expert Utilities and Wizards

Put industry standards into practice with suggested configurations, log analysis, security setup, tuning, and more.

Call our nearest
location or email
info@enterprisedb.com

US	UK	SWEDEN	JAPAN
+1 781-357-3390	+44-20 3740 6778	+46 844 683 476	+81-50-5532-7038
or 1-877-377-4352	FRANCE	POLAND	KOREA
GERMANY	+33 975 187 082	+48 223 079 848	+82-2-6007-2500
+49 322 210 97906	NETHERLANDS	AUSTRALIA	INDIA
	+31 (0)20 808 0937	+61-2-8019-7055	+91-20-66449600/601

